

### Specifications of Wheelchair lift

Model	WL0.3-2.5
Lift capacity	300kg
Travel Height	2500mm
Platform size	1430*1000mm
In and out	Customized
Power Input	Customized according to your local voltage.
Speed	0.1m/s



### Convenient And Safety Design

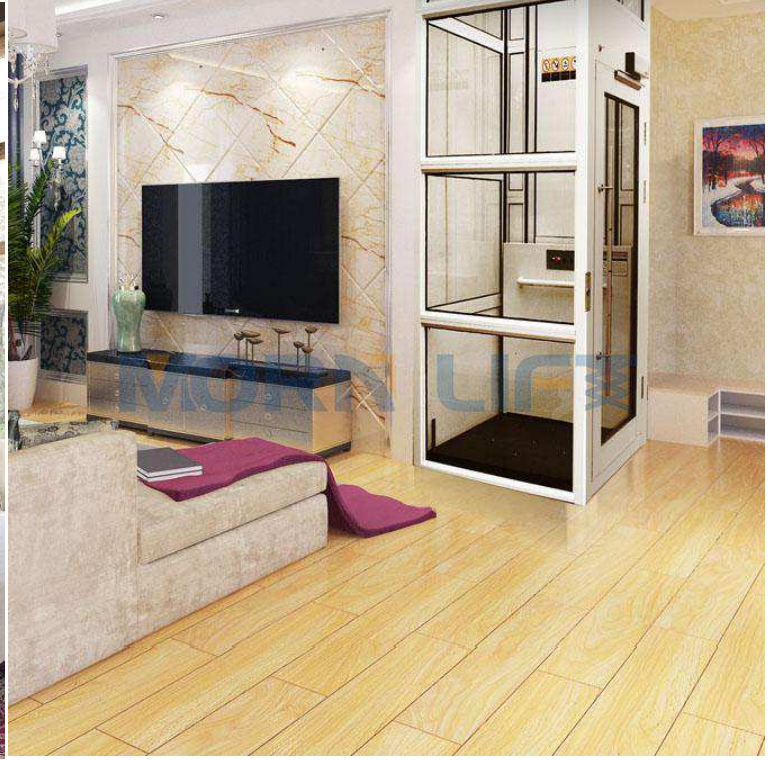
1. Drive System : Hydraulic
2. Control Mode : Inching Switch on platform and column
3. Control ways : Control panel on platform and vertical control column on ground and second floor.
4. Double tempered glass full cover
5. Automatic door: Acrylic
5. Working Condition : Indoor or outdoor
6. Installation : Non-pit installation, directly fixed to concrete floor (the concrete floor below the platform shall not be lower than the ground)

### Safely Device:Reliable

1. Bottom Safety Sensor : The lift will be stopped immediately if the safety edge meets obstacles when going down.
2. Emergency Stop : The lift can be stopped immediately in case of any emergency.
3. Manual decline: The lift can manually decline when the electricity failure.

### Price And Warranty

Payment terms	100% TT before production
Delivery time	30 Working days from payment
Price Validity	15 days
Warranty	12 months, apart from man-made fault







## Safety specs

### Material

1. The lifts use T6063 aluminum alloy, which has good mechanical intensity and corrosion resistance and weather resistance. Ensure the lift 15 years structural warranty.
2. Hardness > 2h, it is not easy to be scratched
3. We make it white powder coating, it looks more beautiful, it can match with all kinds of buildings;



### Double layered tempered glass:

Strong glass which is not easy to be broken and efficiently secure your safety.



### Bottom safety sensor:

There are safety sensors on the four corners and middle of the platform bottom.  
The lift will be stopped immediately if the bottom meets obstacles when lifting down.



### Manual decline valve:

The platform can be lowered down by manual down button in case of the electricity is suddenly Interrupt.





More Details



control plate



control panel



Remote control ( optional )



Lift system



Acrylic door



Motor



Plywood Packing

